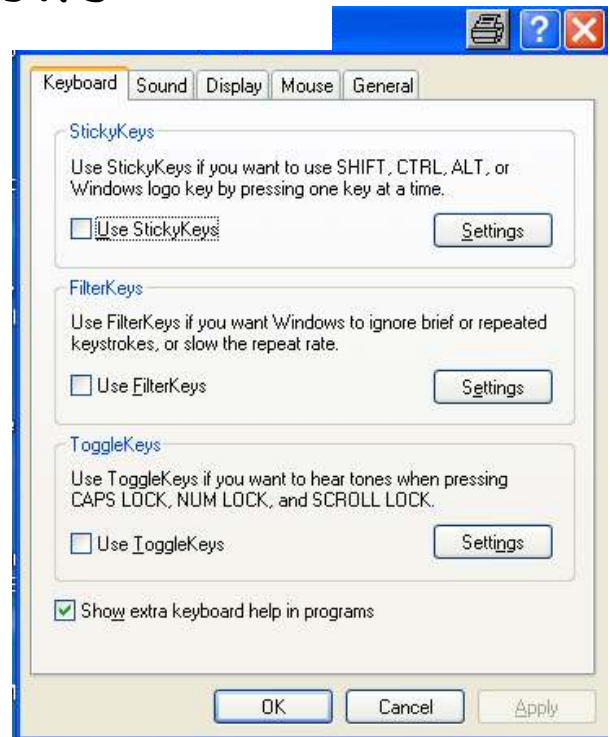


Sticky Keys - Windows

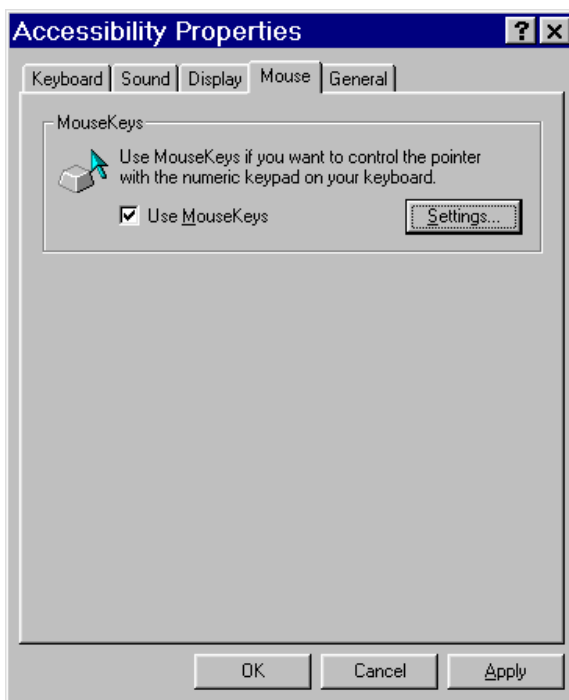
Use Sticky Keys if you want use Shift, CTRL, ALT or Windows logo key by pressing one key at a time.

To turn on Sticky Keys

- Start
- Control Panel
- Accessibility Properties
- Keyboard
- Click on "Use Sticky Keys"
- Apply



Mouse Keys - Windows



To turn on Mouse Keys

- Start
- Control Panel
- Accessibility Properties
- Mouse
- Click on "Use Mouse Keys"
- Apply

Key functions:

- / = left button
- = right button
- + = double click
- 0 = button lock
- . = button release
- 1, 7, 9, 3 = diagonals
- 8 = up
- 2 = down
- 4 = left
- 6 = right
- * = both buttons down